

Summa Remote Citrix Web Access Updates

Pg 1 of 3



Summa Remote Citrix Web Access Updated 5/6/08

Summa Health System has updated the Summa Remote Website. The site now offers up the latest (windows) web client 10.2

This is certified for all windows 32bit platforms, including Vista.

How do I access the website?

Type in or edit the usual Summa Remote address so it states <https://summaremote.summa-health.org> ONLY

Login as you normally would, using your network name/password

(Note – if you are unable to log in to the applications once you log in to Summa Remote check the Message Center area of the applications screen - you may need to “click here” and do a Citrix Client Software install, restart your computer, then log back in)

What looks different?

The Message Center section now includes client information (Note - the ICA Client version listed should be 9.15 or higher)

Lighter colors/background, but you should have access to the same folders and applications

For questions call the Help Desk at 330-375-6555

IMPORTANT

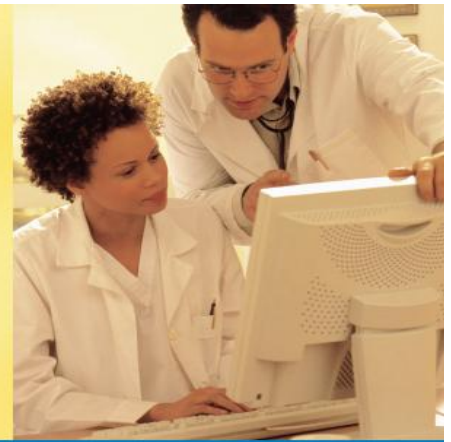
Please be sure that your shortcut is pointed to <https://summaremote.summa-health.org> then re-save your shortcut/favorite pointed here with your first logon.

(The path to the logon page changes with every version)



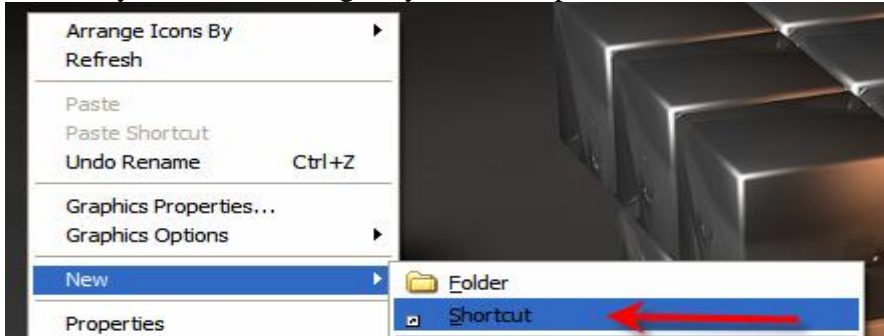
Summa Remote Citrix Web Access Updates

Pg 2 of 3

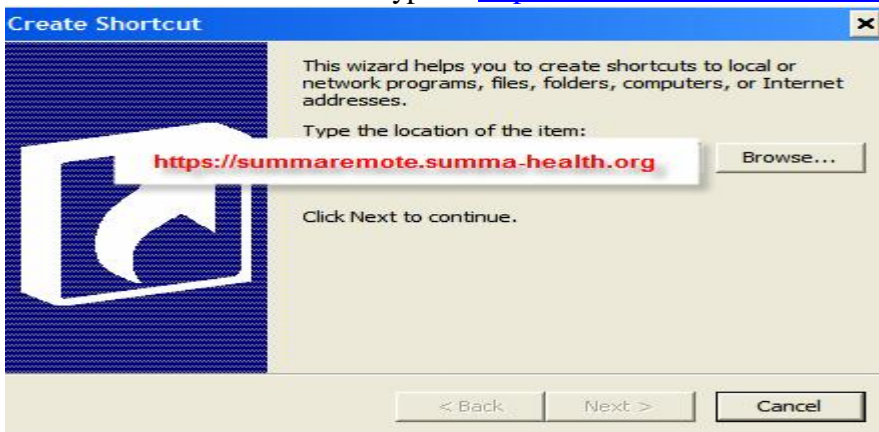


How to Create a Shortcut on your Desktop in 4 steps:

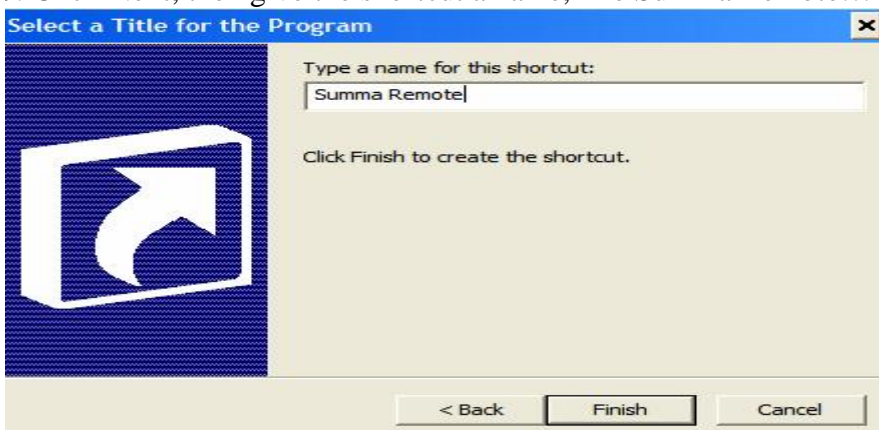
1. Start by RIGHT Clicking on your desktop and select New à Shortcut



2. In the Create Shortcut Box type in <https://summaremote.summa-health.org>



3. Click Next, then give the shortcut a name, like Summa Remote...



4. Click Finish. Now you are ready to use the shortcut to get to the site!

For questions
call the Help
Desk at
330-375-6555



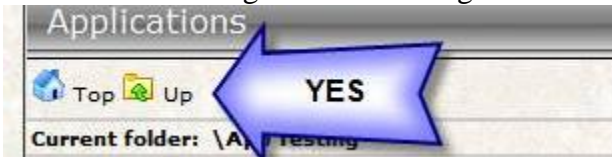
Summa Remote Citrix Web Access Updates

Pg 3 of 3



Additional Summa Remote Web Access Tips:

1. Please navigate the site using the “TOP” and “UP” icons below



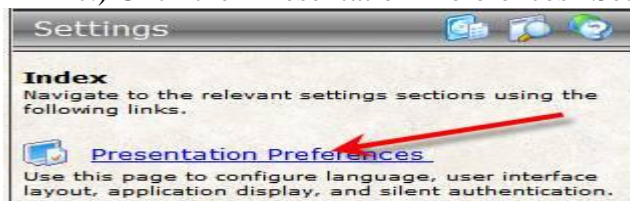
2. Avoid using the back arrow to navigate the applications/folders



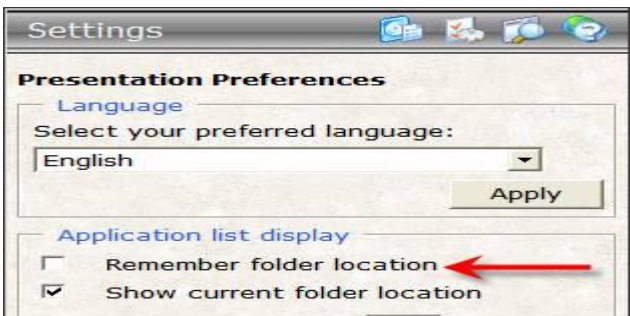
3. To set an application folder as your logon default –
- Open the folder you would like to set as your default
 - Click on the “Customize User Interface” icon below



c.) Click the “Presentation Preferences” Setting



d.) Check “Remember folder location”, then click “OK”
(Otherwise leave “Show current folder location” checked - this is the recommendation if a user does not have a folder default preference)



To return to the applications/folders click here



For questions
call the Help
Desk at
330-375-6555

